

design solutions

law school
teaks it up



Law And Mortar.

Teak Makes a Strong Interior
for Law School.

Since its founding in 1969, the Thomas Jefferson School of Law has become a non-profit, non-university affiliated school with a population of 1,100 students and 175 faculty and staff members. Located in the East Village section of downtown San Diego, the president of the school wanted the new campus to create a warm and inviting environment for the school community.



In addition to the welcoming atmosphere, the eight-story, 180,000 square foot campus was also designed to incorporate San Diego's unique aesthetic appeal into the buildings. Wood, stone and steel were the main components used in the project to achieve these goals. "The inclusion of wood was an important element in creating the kind of finished look we were seeking to achieve," notes Rudolph Hasl, dean and president of the law school.

Montbleau & Associates, Inc., an AWI member firm based in San Diego, California, fabricated and installed the elegant architectural woodwork. Design was provided by ID Studios, an interior design firm located in Solana Beach, California.

Besides the woodworking and interior design firms, the owners of the law school were heavily involved in the design process. Hasl explains that "wood was the best choice to convey a comforting and welcoming feeling for the buildings." This particular project was up for consideration to be LEED Gold Certified, so Kevin Mortensen, chief sustainability officer at Montbleau & Associates, assisted with an early project-wide evaluation of the wood and finishes to make sure they were LEED compliant.

The woodworking firm's Ana Rothman explains that their involvement helped the project team identify which materials had to be specified as FSC wood. "During our review, we found that one of the materials was 'green-washed' and could not be used, so we had to develop our own finish to match the original specification."

Nautical Theme

Montbleau & Associates provided wall paneling inside the moot court, a wood ceiling on the eighth floor that showcases the building's roofline, reception desk at the main entry, library circulation desk, dean's office, employee lunch room, student lockers and the elevator lobbies.

Teak was the primary wood used throughout the project, with a Teak veneer quarter cut and slip matched. Teak is mainly used for building ships, which echoes the nautical elements used in the design. Hasl explains the team sought to use wood products that were local, were representative of the geographic area, environmentally sound, compatible with the color palette developed for the building and emphasized the colors of San Diego.



QUARTER SLICED
TEAK VENEER

“We continue to provide the highest level of quality workmanship and services. Montbleau & Associates has proven over the past 31 years to be worthy of the title ‘preferred company’ status on our clients’ list of qualified contractors.”

— Ron Montbleau, OWNER



at a glance

MANUFACTURING MEMBER:

Montbleau & Associates

LOCATION:

San Diego, California

FOUNDED:

1979

EMPLOYEES:

100

FACILITY:

40,000 square feet

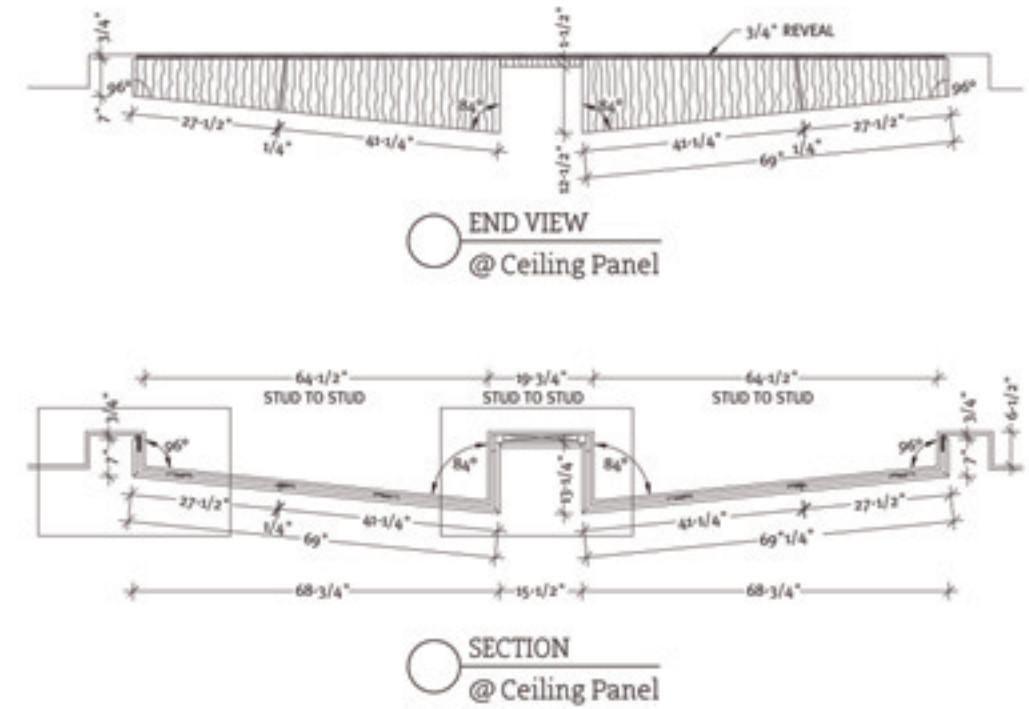
San Diego Inspired

"Design elements reflect local imagery of the bay, ocean shores, cliffs, as well as regional architecture," notes Andrew Fordham of id-studios. "Finishes have a variety of natural, earth-colored stones and textural materials that weave through and bind more vibrant color palettes that vary from floor to floor."

The new courtroom contains Teak judge's bench, jury box, walls and ceilings and separation between the spectator area and the courtroom.



The boardroom is also designed in Teak and features a beautiful, angular ceiling.



The main reception desk is elegantly curved and reflects a welcoming atmosphere.



Building commenced in 2008 and was completed January 2011. This included a new courtroom, complete with a judge's bench, jury box, walls and ceilings and

separation between the spectator area and the courtroom. A boardroom was also included, designed to reflect the millwork in the courtroom. A lounge space, high-

end entertainment and meeting area, library and elegant monumental staircase were also major elements at the school.

Stone and steel were

incorporated into the staircase to create a contrast with the wood details in the ceilings. The framed niches in the entrance area were also created to accentuate the

wood and stone. All building materials were artfully constructed to complement one another.

Incorporating the feel of San Diego and creating

a hospitable environment were the most important goals of the project. To this end, the library end panels and millwork was designed for beauty, functionality and

overall consistency with the city's exceptional colors. "There is a decorative banding on the library circulation desks on both the 4th and 5th floors. It is an accent that



A lecture style classroom that has acoustical wall panels as well as bamboo slats.

goes from a straight line to a curve and has a wavy texture to it," points out Fordham. "This element was to emulate the cliffs of La Jolla with its wind and water carved texture." In order to achieve the right texture, the design was carved by hand.

Beautiful Craftsmanship

There were many remarkable aspects to the design and craftsmanship of the law school. Rothman mentions the notable detailing on the library's circulation desk with its merger of finishes, as well as the complex angles on the

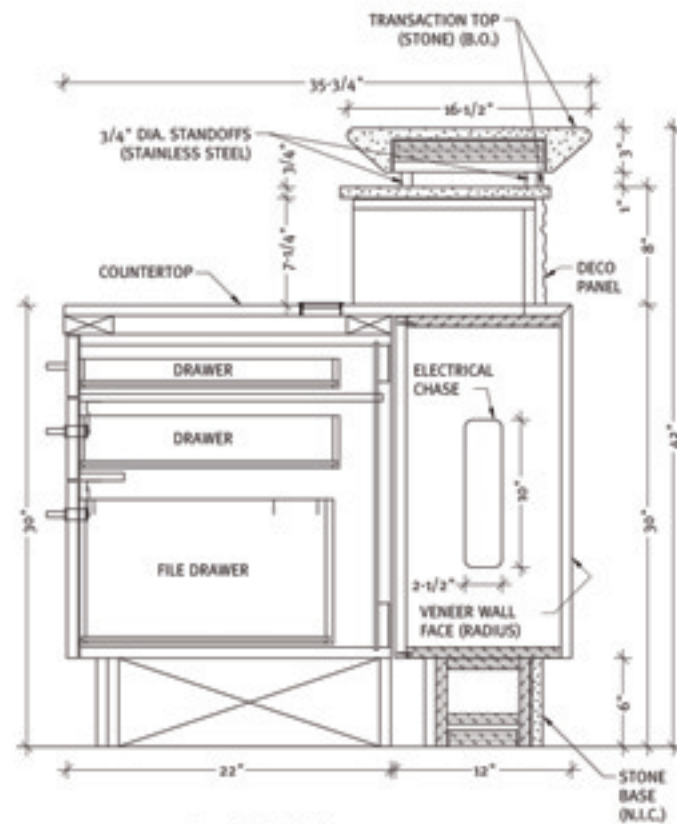
eighth floor executive boardroom ceiling. Hasl agrees that the boardroom ceiling is one of the more noteworthy parts of the project. "Not only does the ceiling follow the exact angles of the roof line, but the angle from east to west provides a keel-shape in the design of the unit," he explains.

While the complex wood-working is quite incredible, perhaps the most unusual finding of the project was revealed by Fordham. He reports that several prehistoric skeletons were found while digging in the founda-



The 5th floor terrace is highlighted by an 85-foot living wall, the largest of its kind in Southern California.

Decorative banding on the library circulation desks emulate the cliffs of La Jolla with its wind and water carved texture.



SECTION @ Tall Counter w/ Drawers





tion, including a mammoth, sloth, sabre-tooth and several fossils of marine life. Because this was such a unique opportunity, Fordham said they incorporated many shells and fossils into the lobby and terrazzo flooring.

Symbiotic Relationship

The woodworking firm, the interior design firm and the law school team all report a close and amicable working relationship. "We have had a long relationship with id-studios where we provide

them with new and out of the ordinary veneer samples early on giving an opportunity to the designers to start a palette for the project," says Rothman. "The detailing on the library circulation desk is a merge of finishes that is particularly noteworthy."

Our relationship with Montbleau has been long and fruitful, echoes Fordham. "We have always felt that Montbleau is the best at what they do, and we always feel confident no matter how detailed and complex our

design. Montbleau will always provide solutions and new ideas that make our design even better than we could have hoped."

The Thomas Jefferson School of Law team also had high praise for the woodworking firm. Hasl says, "The ownership appreciated the extraordinary craftsmanship of the building's various elements, and the woodworking firm appreciated the attention to detail in the design and review of the process. This was a very symbiotic relation-

ship to achieve a functional and yet beautiful end product."

Since classes began in January 2011, students, faculty and staff have been able to enjoy the design of the new campus. The project team achieved their design goals with the excellent workmanship in the library, courtroom, boardroom and meeting space. The Thomas Jefferson School of Law community now resides in an innovative and elegant atmosphere. 🌱

PROJECT:
Thomas Jefferson
School of Law
San Diego, CA

PROJECT OWNER:
Thomas Jefferson
School of Law
San Diego, CA

WOODWORKER:
Montbleau &
Associates
San Diego, CA

DESIGNER:
id-studios
Solana Beach, CA

GENERAL CONTRACTOR:
Bovis Lend Lease
Los Angeles, CA

PHOTOGRAPHER:
Costea
Photography
Santa Ana, CA



Student lockers were also custom fabricated by the woodworking firm.

Wood conveys a comforting and welcoming feeling throughout the spacious building.





Thomas Jefferson School of Law is proud to be one of the most innovative law schools in the nation for architecture and information technology

Awards and Recognition

- Two Prestigious Orchid Awards from the San Diego Architectural Foundation for Landscape Architecture and Programming and Planning
- The Alonzo Award from the Downtown San Diego Partnership for the law school's positive impact on the renewal of the downtown area
- Montbleau, TJSL's millwork contractor, earned the Standard of Excellence Award from the Architectural Woodwork Institute (AWI)
- The US Green Building Council (USGBC) awarded the building a credit toward LEED certification for the innovative use of Hycrete, a concrete admixture that creates an environmentally safe waterproof barrier
- TJSL is anticipating receipt of LEED Gold Status from the USCBG for its environmental features
- The Associated General Contractors of America awarded its 2011 Build San Diego Award to Gould Electric, TJSL's electrical contractor
- Customs Components received a Crystal Achievement Award for its design of the metal fasteners for the law school's grand staircase
- The American Society of Civil Engineers selected TJSL contractors Hope Engineering and Nasland Engineering for its Outstanding Civil Engineering Project Award
- San Diego Gas & Electric and its parent company Sempra Energy recognized TJSL as a Sustainable Communities Champion, with a cash award to the School, the architectural firm and the design firms